

Ledro

S/90



CLASSIC: NEUTRAL WHITE



CLASSIC: GRAPHITE



CLASSIC: BLACK COFFEE



Low thermal inertia



Low water content



Versatility



Easy to stock and install



**16
bar**

Maximum working pressure



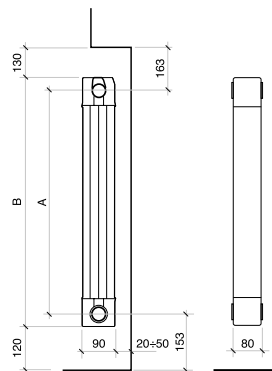
Available in 8 colours



Standard supply	3, 4, 5, 6 sections
Colours	see colours table
Maximum working pressure	16 bar
Test pressure	24 bar
Included in the package	Water diaphragm (retainer cap)

All models **Ledro S/90** are guaranteed **10 years** from installation date on manufacturing faults, provided that the installation has been performed in compliance with the current norms and respecting the instructions relating to the installation, the correct use and the correct maintenance as illustrated on this catalogue.

Model	Heat output					
	ΔT 20	ΔT 30	ΔT 40	ΔT 50	ΔT 60	ΔT 70
	W/sect.	W/sect.	W/sect.	W/sect.	W/sect.	W/sect.
900	52,3	90,9	134,4	182,0	233,3	287,7
1000	55,9	97,2	143,9	195,0	250,0	308,5
1200	64,1	111,3	164,6	223,0	285,8	352,5
1400	71,9	124,8	184,6	250,0	320,3	395,1
1600	77,5	135,9	202,4	275,0	354,8	439,2
1800	86,5	150,0	221,6	300,0	384,2	473,6
2000	90,7	159,5	237,9	324,0	418,0	518,0



MEASURES EXPRESSED IN MILLIMETRES

Model for colour CLASSIC	Code (*)	Depth	Height	Centre distance	Length	Connection diameters	Water capacity	Exponent	Coefficient
		mm	(B) mm	(A) mm	mm	inches	litres/sect.	n	Km
900	81ALExx4	90	966	900	80	G1	0,43	1,3605	0,8886
1000	81BLExx4	90	1066	1000	80	G1	0,47	1,3630	0,9426
1200	81CLExx4	90	1266	1200	80	G1	0,55	1,3610	1,0864
1400	81DLExx4	90	1466	1400	80	G1	0,62	1,3600	1,2227
1600	81ELExx4	90	1666	1600	80	G1	0,70	1,3843	1,2260
1800	81FLExx4	90	1866	1800	80	G1	0,78	1,3570	1,4846
2000	81GLExx4	90	2066	2000	80	G1	0,86	1,3905	1,4083

Model for colour SPECIAL	Code (*)	Depth	Height	Centre distance	Length	Connection diameters	Water capacity	Exponent	Coefficient
		mm	(B) mm	(A) mm	mm	inches	litres/sect.	n	Km
900	81ALExx4	90	966	900	80	G1	0,43	1,3605	0,8886
1000	81BLExx4	90	1066	1000	80	G1	0,47	1,3630	0,9426
1200	81CLExx4	90	1266	1200	80	G1	0,55	1,3610	1,0864
1400	81DLExx4	90	1466	1400	80	G1	0,62	1,3600	1,2227
1600	81ELExx4	90	1666	1600	80	G1	0,70	1,3843	1,2260
1800	81FLExx4	90	1866	1800	80	G1	0,78	1,3570	1,4846
2000	81GLExx4	90	2066	2000	80	G1	0,86	1,3905	1,4083

Maximum working pressure: 1600 kpa (16 bar)

 Characteristic equation of the model $\Phi = K_m \Delta T^n$

Stated heat output values are in accordance with European Standard EN 442-1:2014 and certified by Cetiat - Notified body No. 1623.

(*) Enter the colour code instead of xx. After the last digit (4) add the number of elements required.

 For example, to request the **Ledro S/90 (81ALExx4) model 900 Silver colour of 4 el.**, the code would be **81ALE + 07 + 404**

CLASSIC						SPECIAL
NEUTRAL WHITE	SILVER	GRAPHITE	SLATE GREY	BLACK COFFEE	BRONZE	HAMMERED BLACK
Cod. 06	Cod. 07	Cod. 3R	Cod. 04	Cod. 05	Cod. 08	Cod. 17

Item	Description	Colour	Code
	1/2" plug and fixing kit - Colour: ACCORDING TO THE CHOICE 2 Rh G 1/2" adapters; 2 Lh G 1/2" adapters; 4 retaining gaskets for model Blitz 4 retaining gaskets for model Ledro; 1/2" manual air-purging valve with gasket; 1 Rh G 1" blind plug; 1 Lh G 1" blind plug; 4 fixing brackets.	NEUTRAL WHITE SILVER BRONZE HAMMERED BLACK SLATE GREY GRAPHITE BLACK COFFEE	55014906 55014907 55014908 55014917 5501493B 5501493R 5501493V
	Rubber lockshield plug (water diaphragm)	-	521011
	A 32/1 O-ring seal for nipples, plugs and adapters	-	530102
	A 33/1 Nipple for home furnishing radiators	-	521012

