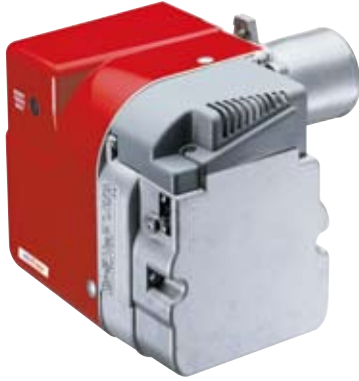


Diesel oil burners

Focós Dual 1G - Focós 1G



FOCÓS DUAL 1G - FOCÓS 1G

Single-stage, diesel oil-fired burner.

- Engineered for low- and medium-pressurized boilers
- External adjustment of combustion head and air intake
- Sound-proofed casing
- Insulating screen

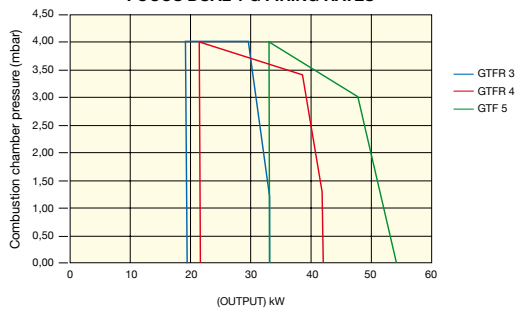
Accessories included in the supply

- No. 2 flexible pipes for diesel-oil L. 900 mm
- Flange and seal

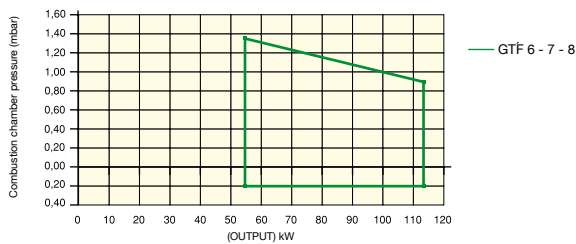
Range

- Focós Dual 1 GTFR diesel oil-fired blown burner, fitted with a 55 W pre-heater
- Focós Dual 1 GTF / Focós 1 GTF diesel oil-fired blown burner

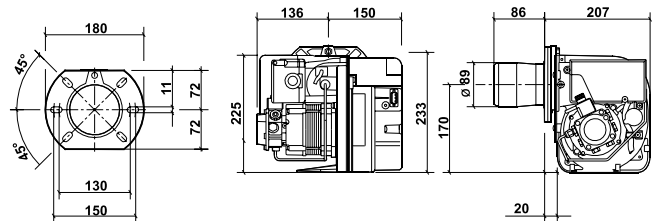
FOCÓS DUAL 1 G FIRING RATES



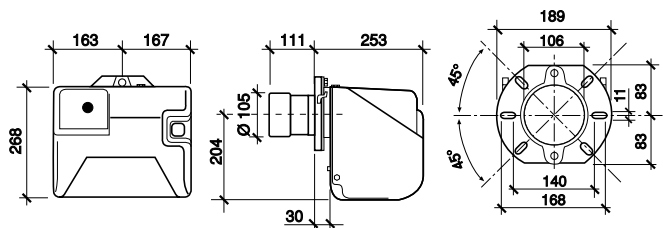
FOCÓS 1 G FIRING RATES



MODELS FOCÓS DUAL 1 GTFR 3 - GTFR 4 - GTF 5



MODELS FOCÓS 1 GTF 6 - GTF 7 - GTF 8



Model	Code	Pre-adjustment output (kW)	Gross weight
FOCÓS DUAL 1 GTFR 3	BFBI10A327	26.6	Kg. 10
FOCÓS DUAL 1 GTFR 4	BFBI10A338	36.3	Kg. 10
FOCÓS DUAL 1 GTF 5	BFBI10A550	47.2	Kg. 12
FOCÓS 1 GTF 6	BFGxx0D660	57.6	Kg. 16
FOCÓS 1 GTF 7	BFGxx0D770	68.6	Kg. 16
FOCÓS 1 GTF 8	BFGxx0D885	80.6	Kg. 16

TECHNICAL SPECIFICATIONS		FOCÓS DUAL 1 GTFR 3	FOCÓS DUAL 1 GTFR 4	FOCÓS DUAL 1 GTF 5
Fuel	-	diesel-oil: viscosity = 1,4°E, Hi= 42,7 MJ/kg (10200 kcal/kg) T= 20°C		
Heat output range	KW (kg/h)	19 ÷ 33.5 (1.6 ÷ 2.8)	21.4 ÷ 41.5 (1.8 ÷ 3.5)	33.2 ÷ 53.4 (2.8 ÷ 4.5)
Pre-adjustment heat output	kW	26.6	36.3	47.2
Nozzle: brand / type	-	Delavan W. B - Steinen Q - Danfoss S		
Nozzle	USgal/h	0.65	0.85	1.00
Nozzle: angle / cone	-	60°W		
Diesel-oil consumption (± 4%)*	kg/h	2.3	3.1	4
Diesel-oil calibration pressure*	bar	12.5	12	12
Air calibration*	-	3	4.6	3.8
Combustion head calibration*	-	fixed	fixed	fixed
Value of CO ₂ *	%	12.5		
Maximum counterpressure*	Pa	370	320	300
Combustion head diameter (B)	mm	89	89	89
Combustion head length (A)	mm	86	86	86
Pump pressure range	bar	8 ÷ 15		
(Max.) pump depression	bar	-0.4		
Diesel-oil pre-heater	W	55	55	-
Electrical power supply	-	monophase 230 V - 50 Hz		
Motor condenser	µF	4.5	4.5	4.5
Absorbed electrical power	KW	0.215	0.215	0.16
Motor current	A	0,7	0,7	0,7
Electrical protection	-	IP 40		

* **IMPORTANT: the reported values and features refer to the burner pre-adjustment values.**

TECHNICAL SPECIFICATIONS		FOCÓS 1 GTF 6	FOCÓS 1 GTF 7	FOCÓS 1 GTF 8
Fuel	-	diesel-oil: viscosity = 1,4°E, Hi= 42,7 MJ/kg (10200 kcal/kg) T= 20°C		
Heat output range	KW (kg/h)	55.7÷113 (4.7 ÷ 9.5)	55.7÷113 (4.7 ÷ 9.5)	55.7÷113 (4.7 ÷ 9.5)
Pre-adjustment heat output	kW	57.6	68.6	80.6
Nozzle: brand / type	-	Delavan W. B - Steinen Q - Danfoss S		
Nozzle	USgal/h	1.10	1.35	1.65
Nozzle: angle / cone	-	60°B	60°B	60°B
Diesel-oil consumption (± 4%)*	kg/h	4.86	5.8	6.8
Diesel-oil calibration pressure*	bar	12	11	11
Air calibration*	-	3.2	4.5	5.75
Combustion head calibration*	-	2.0	2.5	2.5
Value of CO ₂ *	%	12.5		
Maximum counterpressure*	Pa	125	115	110
Combustion head diameter (B)	mm	105	105	105
Combustion head length (A)	mm	111	111	111
Pump pressure range	bar	8 ÷ 15		
(Max.) pump depression	bar	-0.4		
Electrical power supply	-	monophase 230 V - 50 Hz		
Motor condenser	µF	5	5	5
Absorbed electrical power	KW	0.160	0.160	0.160
Motor current	A	1.3	1.3	1.3
Electrical protection	-	IP 40		

* **IMPORTANT: the reported values and features refer to the burner pre-adjustment values.**

Boiler and diesel oil-fired burner coupling

DRAGO DUAL	BURNER MODEL	BURNER TYPE
DRAGO DUAL 23	FOCÓS DUAL 1 GTFR 3	SINGLE STAGE
DRAGO DUAL 33	FOCÓS DUAL 1 GTFR 4	SINGLE STAGE
DRAGO DUAL 43	FOCÓS DUAL 1 GTF 5	SINGLE STAGE
DRAGO DUAL 53	FOCÓS 1 GTF 6	SINGLE STAGE
DRAGO DUAL 63	FOCÓS 1 GTF 7	SINGLE STAGE
DRAGO DUAL 73	FOCÓS 1 GTF 8	SINGLE STAGE

TAURUS DUAL	BURNER MODEL [♦]	BURNER TYPE
TAURUS DUAL 70	RG 2 KD	TWO-STAGE
TAURUS DUAL 80	RG 3	SINGLE STAGE
	RG 3D	TWO-STAGE
TAURUS DUAL 90	RG 3	SINGLE STAGE
	RG 3D	TWO-STAGE
TAURUS DUAL 100	RG 3	SINGLE STAGE
	RG 3D	TWO-STAGE
TAURUS DUAL 120	RG 3	SINGLE STAGE
	RG 3D	TWO-STAGE
TAURUS DUAL 150	RG 4S	SINGLE STAGE
	RG 4D	TWO-STAGE
TAURUS DUAL 200	RG 5S	SINGLE STAGE
	RG 5D	TWO-STAGE
	RL 28/M	MODULATING
TAURUS DUAL 250	RL 34/1 MZ t.c.	SINGLE STAGE
	RL 34 MZ t.c.	TWO-STAGE
	RL 28/M	MODULATING
TAURUS DUAL 300	RL 34 MZ t.c.	TWO-STAGE
	RL 28/M	MODULATING
TAURUS DUAL 350	RL 44 MZ t.c.	TWO-STAGE
	RL 38/M	MODULATING
TAURUS DUAL 400	RL 50 t.c.	TWO-STAGE
	RL 38/M	MODULATING
TAURUS DUAL 500	RL 50 t.l.	TWO-STAGE
	RL 50/M	MODULATING
TAURUS DUAL 620	RL 70 t.l.	TWO-STAGE
	RL 70/M	MODULATING
TAURUS DUAL 750	RL 70 t.l.	TWO-STAGE
	RL 70/M	MODULATING
TAURUS DUAL 850	RL 100 t.l.	TWO-STAGE
	RL 100/M	MODULATING
TAURUS DUAL 950	RL 100 t.l.	TWO-STAGE
	RL 100/M	MODULATING
TAURUS DUAL 1020	RL 100 t.l.	TWO-STAGE
	RL 100/M	MODULATING

TAURUS DUAL	BURNER MODEL [♦]	BURNER TYPE
TAURUS DUAL 1200	RL 130 t.l.	TWO-STAGE
	RL 130/M	MODULATING
TAURUS DUAL 1300	RL 130 t.l.	TWO-STAGE
	RL 130/M	MODULATING
TAURUS DUAL 1400	RL 130 t.l.	TWO-STAGE
	RL 130/M	MODULATING
TAURUS DUAL 1600	RL 190 t.c.	TWO-STAGE
	RL 190/M	MODULATING
TAURUS DUAL 1800	RL 190 t.c.	TWO-STAGE
	RL 190/M	MODULATING
TAURUS DUAL 2000	RL 190 t.c.	TWO-STAGE
	RL 190/M	MODULATING
TAURUS DUAL 2400	P 300 T/G t.c.	TWO-STAGE
	P 300 P/G t.c.	MODULATING
TAURUS DUAL 3000	P 450 T/G t.c.	TWO-STAGE
	P 450 P/G t.c.	MODULATING
TAURUS DUAL 3500	P 450 T/G t.c.	TWO-STAGE
	P 450 P/G t.c.	MODULATING

KEY


t.c.: Short head


t.l.: Long head

[♦]Recommended coupling of Riello burners to Nova Florida boilers. Burners may be bought from Riello distributors in your country.

Boiler and diesel gas-fired burner coupling

DRAGO DUAL	BURNER MODEL	BURNER TYPE	GAS TRAIN MODEL	MIN. PRESSURE (mbar)
DRAGO DUAL 23	-	-	-	-
DRAGO DUAL 33	Focós 1 MTF 50	SINGLE STAGE	MB - DLE 403	9
			MB - DLE 405	7
DRAGO DUAL 43	Focós 1 MTF 50	SINGLE STAGE	MB - DLE 405	7
DRAGO DUAL 53	Focós 1 MTF 100	SINGLE STAGE	MB - DLE 405	10
			MB - DLE 407	8
DRAGO DUAL 63	Focós 1 MTF 100	SINGLE STAGE	MB - DLE 405	10
			MB - DLE 407	8
DRAGO DUAL 73	Focós 1 MTF 100	SINGLE STAGE	MB - DLE 405	12
			MB - DLE 407	10

TAURUS DUAL	BURNER MODEL 	BURNER TYPE	GAS TRAIN MODEL	MIN. PRESSURE (mbar)
TAURUS DUAL 70 TAURUS DUAL HR 70	BS 2 t.l.	SINGLE STAGE	MBDLE 405	13
	BS 2 t.l.	SINGLE STAGE	MBDLE 407 FB	11
	BS 2D t.l.	TWO-STAGE	MBZRDLE 405	12.5
	BS 2D t.l.	TWO-STAGE	MBZRDLE 407 FB	11
	BS 2/M t.l. *	MODULATING	CG120	12.5
TAURUS DUAL 80 TAURUS DUAL HR 80	BS 2 t.l.	SINGLE STAGE	MBDLE 405	15
	BS 2 t.l.	SINGLE STAGE	MBDLE 407 FB	13
	BS 2D t.l.	TWO-STAGE	MBZRDLE 405	15
	BS 2D t.l.	TWO-STAGE	MBZRDLE 407 FB	13
	BS 2/M t.l. *	MODULATING	CG220	17
TAURUS DUAL 90 TAURUS DUAL HR 90	BS 3 t.l.	SINGLE STAGE	MBDLE 407 FC	10
	BS 3 t.l.	SINGLE STAGE	MBDLE 410 FC	10
	BS 3D t.l.	TWO-STAGE	MBZRDLE 407 FC	10
	BS 3D t.l.	TWO-STAGE	MBZRDLE 410	10
	BS 3/M t.l. *	MODULATING	CG220	10
TAURUS DUAL 100 TAURUS DUAL HR 100	BS 3 t.l.	SINGLE STAGE	MBDLE 407 FC	10
	BS 3 t.l.	SINGLE STAGE	MBDLE 410 FC	10
	BS 3D t.l.	TWO-STAGE	MBZRDLE 407 FC	10
	BS 3D t.l.	TWO-STAGE	MBZRDLE 410	10
	BS 3/M t.l. *	MODULATING	CG220	10
TAURUS DUAL 120 TAURUS DUAL HR 120	BS 3 t.l.	SINGLE STAGE	MBDLE 407 FC	13
	BS 3 t.l.	SINGLE STAGE	MBDLE 410 FC	11
	BS 3 t.l.	SINGLE STAGE	MBDLE 412	10
	BS 3D t.l.	TWO-STAGE	MBZRDLE 407 FC	12
	BS 3D t.l.	TWO-STAGE	MBZRDLE 410	10
	BS 3/M t.l. *	MODULATING	CG220	10
TAURUS DUAL 150 TAURUS DUAL HR 150	BS 3 t.l.	SINGLE STAGE	MBDLE 410 FC	14
	BS 3 t.l.	SINGLE STAGE	MBDLE 412	13
	BS 3D t.l.	TWO-STAGE	MBZRDLE 410	15
	BS 3D t.l.	TWO-STAGE	MBZRDLE 412	13
	BS 3/M t.l. *	MODULATING	CG220	13
TAURUS DUAL 200 TAURUS DUAL HR 200	BS 4 t.l.	SINGLE STAGE	MBDLE 410 FC	12
	BS 4 t.l.	SINGLE STAGE	MBDLE 412	10
	BS 4D t.l.	TWO-STAGE	MBZRDLE 410	18
	BS 4D t.l.	TWO-STAGE	MBZRDLE 412	15
	RS 34/M MZ t.c. *	MODULATING	MBDLE 410 AC	20
TAURUS DUAL 250 TAURUS DUAL HR 250	RS 5	SINGLE STAGE	MBDLE 412	16
	RS 5	SINGLE STAGE	MBDLE 415	10
	RS 5D	TWO-STAGE	MBZRDLE 415	11
	RS 34 MZ t.l.	TWO-STAGE	MBD 415 AC	17
	RS 34 MZ t.l.	TWO-STAGE	MBD 420 AA	15
	RS 34/M MZ t.c. *	MODULATING	MBD 412	20
TAURUS DUAL 300 TAURUS DUAL HR 300	RS 5D	TWO-STAGE	MBZRDLE 415	12
	RS 34 MZ t.l.	TWO-STAGE	MBD 415	17
	RS 34 MZ t.l.	TWO-STAGE	MBD 420 AA	15
	RS 34 MZ t.l.	TWO-STAGE	MBD 420 AA CT	15
	RS 34/M MZ t.c. *	MODULATING	MBD 415	20
TAURUS DUAL 350 TAURUS DUAL HR 350	RS 44 MZ t.c. M.F.	TWO-STAGE	MBD 420 AA	15
	RS 44 MZ t.c. M.F.	TWO-STAGE	MBD 420 AA CT	15
	RS 44/M MZ t.c. M.F.*	MODULATING	MBD 415	13
	RS 44/M MZ t.c. M.F.*	MODULATING	MBD 420	10

TAURUS DUAL	BURNER MODEL 	BURNER TYPE	GAS TRAIN MODEL	MIN. PRESSURE (mbar)
TAURUS DUAL 400 TAURUS DUAL HR 400	RS 44 MZ t.c. M.F.	TWO-STAGE	MBD 420 AA	11
	RS 44 MZ t.c. M.F.	TWO-STAGE	MBD 420 AA CT	11
	RS 50 t.l.	TWO-STAGE	MBD 420 AA	11
	RS 50 t.l.	TWO-STAGE	MBD 420 AA CT	11
	RS 50 t.l.	TWO-STAGE	MBC 1200 SE 50 AA	10
	RS 50 t.l.	TWO-STAGE	MBC 1200 SE 50 AA CT	10
	RS 44/M MZ t.c. M.F. *	MODULATING	MBD 420 AA	11
	RS 44/M MZ t.c. M.F. *	MODULATING	MBD 420 AA CT	11
TAURUS DUAL 500 TAURUS DUAL HR 500	RS 50 t.l.	TWO-STAGE	MBD 420 AA	15
	RS 50 t.l.	TWO-STAGE	MBD 420 AA CT	15
	RS 50 t.l.	TWO-STAGE	MBC 1200 SE 50 AA	12
	RS 50 t.l.	TWO-STAGE	MBC 1200 SE 50 AA CT	12
	RS 70/M t.l. *	MODULATING	MBD 420	15
	RS 70/M t.l. *	MODULATING	MBD 420 CT	15
	RS 70/M t.l. *	MODULATING	MBC 1200 SE 50	12
	RS 70/M t.l. *	MODULATING	MBC 1200 SE 50 CT	12
TAURUS DUAL 620 TAURUS DUAL HR 620	RS 70 t.l.	TWO-STAGE	MBD 420 AA	20
	RS 70 t.l.	TWO-STAGE	MBD 420 AA CT	20
	RS 70 t.l.	TWO-STAGE	MBC 1200 SE 50 AA	13
	RS 70 t.l.	TWO-STAGE	MBC 1200 SE 50 AA CT	13
	RS 70/M t.l. *	MODULATING	MBD 420	20
	RS 70/M t.l. *	MODULATING	MBD 420 CT	20
	RS 70/M t.l. *	MODULATING	MBC 1200 SE 50	13
	RS 70/M t.l. *	MODULATING	MBC 1200 SE 50 CT	13
TAURUS DUAL 750 TAURUS DUAL HR 750	RS 70 t.l.	TWO-STAGE	MBD 420	32
	RS 70 t.l.	TWO-STAGE	MBD 420 CT	32
	RS 70 t.l.	TWO-STAGE	MBC 1200 SE 50	22
	RS 70 t.l.	TWO-STAGE	MBC 1200 SE 50 CT	22
	RS 100 t.l.	TWO-STAGE	MBD 420	20
	RS 100 t.l.	TWO-STAGE	MBD 420 CT	20
	RS 100 t.l.	TWO-STAGE	MBC 1200 SE 50	11
	RS 100 t.l.	TWO-STAGE	MBC 1200 SE 50 CT	11
	RS 70/M t.l. *	MODULATING	MBD 420	32
	RS 70/M t.l. *	MODULATING	MBD 420 CT	32
	RS 70/M t.l. *	MODULATING	MBC 1200 SE 50	22
	RS 70/M t.l. *	MODULATING	MBC 1200 SE 50 CT	22
	RS 100/M t.l. *	MODULATING	MBD 420	20
	RS 100/M t.l. *	MODULATING	MBD 420 CT	20
RS 100/M t.l. *	MODULATING	MBC 1200 SE 50	11	
RS 100/M t.l. *	MODULATING	MBC 1200 SE 50 CT	11	
TAURUS DUAL 850 TAURUS DUAL HR 850	RS 100 t.l.	TWO-STAGE	MBD 420	25
	RS 100 t.l.	TWO-STAGE	MBD 420 CT	25
	RS 100 t.l.	TWO-STAGE	MBC 1200 SE 50	13
	RS 100 t.l.	TWO-STAGE	MBC 1200 SE 50 CT	13
	RS 100/M t.l. *	MODULATING	MBD 420	25
	RS 100/M t.l. *	MODULATING	MBD 420 CT	25
	RS 100/M t.l. *	MODULATING	MBC 1200 SE 50	13
	RS 100/M t.l. *	MODULATING	MBC 1200 SE 50 CT	13

 Recommended coupling of Riello burners to Nova Florida boilers. Burners may be bought from Riello distributors in your country.

TAURUS DUAL	BURNER MODEL [♦]	BURNER TYPE	GAS TRAIN MODEL	MIN. PRESSURE (mbar)
TAURUS DUAL 950 TAURUS DUAL HR 950	RS 100 t.l.	TWO-STAGE	MBD 420	28
	RS 100 t.l.	TWO-STAGE	MBD 420 CT	28
	RS 100 t.l.	TWO-STAGE	MBC 1200 SE 50	15
	RS 100 t.l.	TWO-STAGE	MBC 1200 SE 50 CT	15
	RS 100/M t.l. *	MODULATING	MBD 420	28
	RS 100/M t.l. *	MODULATING	MBD 420 CT	28
	RS 100/M t.l. *	MODULATING	MBC 1200 SE 50	15
	RS 100/M t.l. *	MODULATING	MBC 1200 SE 50 CT	15
TAURUS DUAL 1020 TAURUS DUAL HR 1020	RS 100 t.l.	TWO-STAGE	MBD 420	42
	RS 100 t.l.	TWO-STAGE	MBD 420 CT	42
	RS 100 t.l.	TWO-STAGE	MBC 1200 SE 50	22
	RS 100 t.l.	TWO-STAGE	MBC 1200 SE 50 CT	22
	RS 100/M t.l. *	MODULATING	MBD 420	32
	RS 100/M t.l. *	MODULATING	MBD 420 CT	32
	RS 100/M t.l. *	MODULATING	MBC 1200 SE 50	18
	RS 100/M t.l. *	MODULATING	MBC 1200 SE 50 CT	18
TAURUS DUAL 1200 TAURUS DUAL HR 1200	RS 130 t.c.	TWO-STAGE	MBD 420	38
	RS 130 t.c.	TWO-STAGE	MBD 420 CT	38
	RS 130 t.c.	TWO-STAGE	MBC 1200 SE 50	19
	RS 130 t.c.	TWO-STAGE	MBC 1200 SE 50 CT	19
	RS 130/M t.c. *	MODULATING	MBD 420	32
	RS 130/M t.c. *	MODULATING	MBD 420 CT	32
	RS 130/M t.c. *	MODULATING	MBC 1200 SE 50	17.5
	RS 130/M t.c. *	MODULATING	MBC 1200 SE 50 CT	17.5
TAURUS DUAL 1300 TAURUS DUAL HR 1300	RS 130 t.c.	TWO-STAGE	MBD 420	42
	RS 130 t.c.	TWO-STAGE	MBD 420 CT	42
	RS 130 t.c.	TWO-STAGE	MBC 1200 SE 50	22
	RS 130 t.c.	TWO-STAGE	MBC 1200 SE 50 CT	22
	RS 130/M t.c. *	MODULATING	MBD 420	42
	RS 130/M t.c. *	MODULATING	MBD 420 CT	42
	RS 130/M t.c. *	MODULATING	MBC 1200 SE 50	22
	RS 130/M t.c. *	MODULATING	MBC 1200 SE 50 CT	22
TAURUS DUAL 1400 TAURUS DUAL HR 1400	RS 190	TWO-STAGE	MBC 1200 SE 50 AI	22
	RS 190	TWO-STAGE	MBC 1200 SE 50 AI CT	22
	RS 190/M t.c. *	MODULATING	MBC 1200 SE 50 AI	22
	RS 190/M t.c. *	MODULATING	MBC 1200 SE 50 AI CT	22
TAURUS DUAL 1600 TAURUS DUAL HR 1600	RS 190	TWO-STAGE	MBC 1200 SE 50 AI	30
	RS 190	TWO-STAGE	MBC 1200 SE 50 AI CT	30
	RS 190	TWO-STAGE	MBC 1900 SE 65 AF	22
	RS 190	TWO-STAGE	MBC 1900 SE 65 AF CT	22
	RS 190/M t.c. *	MODULATING	MBC 1200 SE 50 AI	30
	RS 190/M t.c. *	MODULATING	MBC 1200 SE 50 AI CT	30
	RS 190/M t.c. *	MODULATING	MBC 1900 SE 65 AF	22
	RS 190/M t.c. *	MODULATING	MBC 1900 SE 65 AF CT	22

TAURUS DUAL	BURNER MODEL [◆]	BURNER TYPE	GAS TRAIN MODEL	MIN. PRESSURE (mbar)
TAURUS DUAL 1800 TAURUS DUAL HR 1800	RS 190	TWO-STAGE	MBC 1200 SE 50 AI	35
	RS 190	TWO-STAGE	MBC 1200 SE 50 AI CT	35
	RS 190	TWO-STAGE	MBC 1900 SE 65 AF	27
	RS 190	TWO-STAGE	MBC 1900 SE 65 AF CT	27
	RS 190/M t.c. *	MODULATING	MBC 1200 SE 50 AI	35
	RS 190/M t.c. *	MODULATING	MBC 1200 SE 50 AI CT	35
	RS 190/M t.c. *	MODULATING	MBC 1900 SE 65 AF	27
	RS 190/M t.c. *	MODULATING	MBC 1900 SE 65 AF CT	27
TAURUS DUAL 2000 TAURUS DUAL HR 2000	RS 250/M t.c.	TWO-STAGE	MBC 1200 SE 50	50
	RS 250/M t.c.	TWO-STAGE	MBC 1200 SE 50 CT	50
	RS 250/M t.c.	TWO-STAGE	MBC 1900 SE 65 AD	40
	RS 250/M t.c.	TWO-STAGE	MBC 1900 SE 65 AD CT	40
	RS 250/M t.c. ST *	MODULATING	MBC 1200 SE 50	50
	RS 250/M t.c. ST *	MODULATING	MBC 1200 SE 50 CT	50
	RS 250/M t.c. ST *	MODULATING	MBC 1900 SE 65 AD	40
	RS 250/M t.c. ST *	MODULATING	MBC 1900 SE 65 AD CT	40
TAURUS DUAL 2400 TAURUS DUAL HR 2400	RS 300/P BLU	TWO-STAGE	VGDF 65 AI1 CT	40
	RS 300/P BLU	TWO-STAGE	VGDF 80 AI2 CT	30
	RS 300/P M BLU *	MODULATING	VGDF 65 CT	40
TAURUS DUAL 3000 TAURUS DUAL HR 3000	RS 300/P BLU	TWO-STAGE	VGDF 65 AI1 CT	50
	RS 300/P BLU	TWO-STAGE	VGDF 80 AI2 CT	35
	RS 300/P M BLU *	MODULATING	VGDF 65 CT	50
	RS 300/P M BLU *	MODULATING	VGDF 80 CT	35
TAURUS DUAL 3500 TAURUS DUAL HR 3500	RS 400/P BLU	TWO-STAGE	VGDF 65 AI2 CT	70
	RS 400/P BLU	TWO-STAGE	VGDF 100 AI3 CT	35
	RS 400/P M BLU *	MODULATING	VGDF 65 CT	70
	RS 400/P M BLU *	MODULATING	VGDF 100 CT	35

KEY

*: Models including modulation kit

CT: Tightness control

ST: Temperature probe

t.c.: Short head

t.l.: Long head

FB: Type b flange

FC: Type c flange

AA: With adaptor A

AC: With adaptor C

AD: With adaptor D

AF: With adaptor F

AI: With adaptor I

AXx: With adaptor I1

AI2: With adaptor I2

AI3: With adaptor I3

[◆] Recommended coupling of Riello burners to Nova Florida boilers. Burners may be bought from Riello distributors in your country.